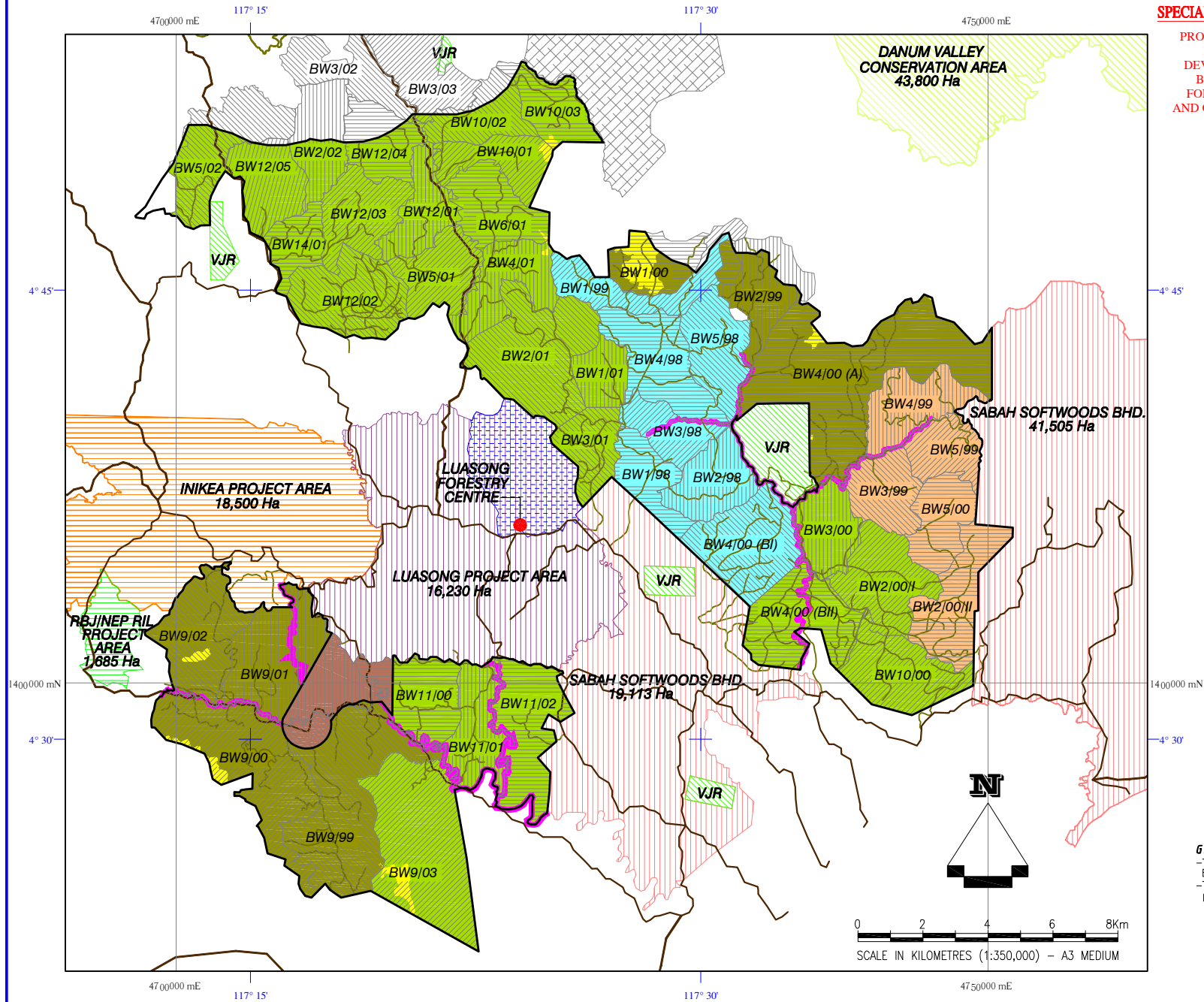
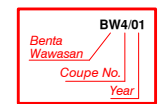


PROPOSED OIL PALM PLANTATION (OPP) AND INDUSTRIAL TREE PLANTATION (ITP) DEVELOPMENT AT BENTA WAWASAN I AND BENTA WAWASAN IIC, YAYASAN SABAH FOREST MANAGEMENT AREA, KALABAKAN AND GUNUNG RARA FOREST RESERVES, TAWAU DISTRICT, SABAH

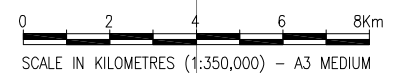


LEGEND:

- PROJECT BOUNDARY
- VIRGIN JUNGLE RESERVE
- DANUM VALLEY CONSERVATION AREA
- MALIAU BASIN CONSERVATION AREA
- SABAH SOFTWOODS BHD.
- INIKEA PROJECT AREA
- SUAS PROJECT AREA
- RBJ/NEP RIL PROJECT AREA
- LUASONG PROJECT AREA
- WATERSHED FOR LUASONG FORESTRY CENTRE
- ORANG UTAN RESERVE AREA
- SALT LICK / MUD VOLCANO BUFFER
- MAIN LOGGING ROADS
- SECONDARY LOGGING ROADS
- MONTANE FOREST
- LOWLAND MIXED DIPTEROCARP FOREST HEAVILY LOGGED
- LOWLAND MIXED DIPTEROCARP FOREST
- CLEARED OF VEGETATION
- ACACIA MANGIUM
- RIVERINE VEGETATION



GRID
 -The numbered lines indicate the Netherlands East Indies Grid, Equatorial Zone, Basell Spheroid
 -The outer ticks / inner crosses indicate the Latitude and Longitude



VEGETATION DISTRIBUTION WITHIN THE PROJECT AREA

FIGURE: A1.8