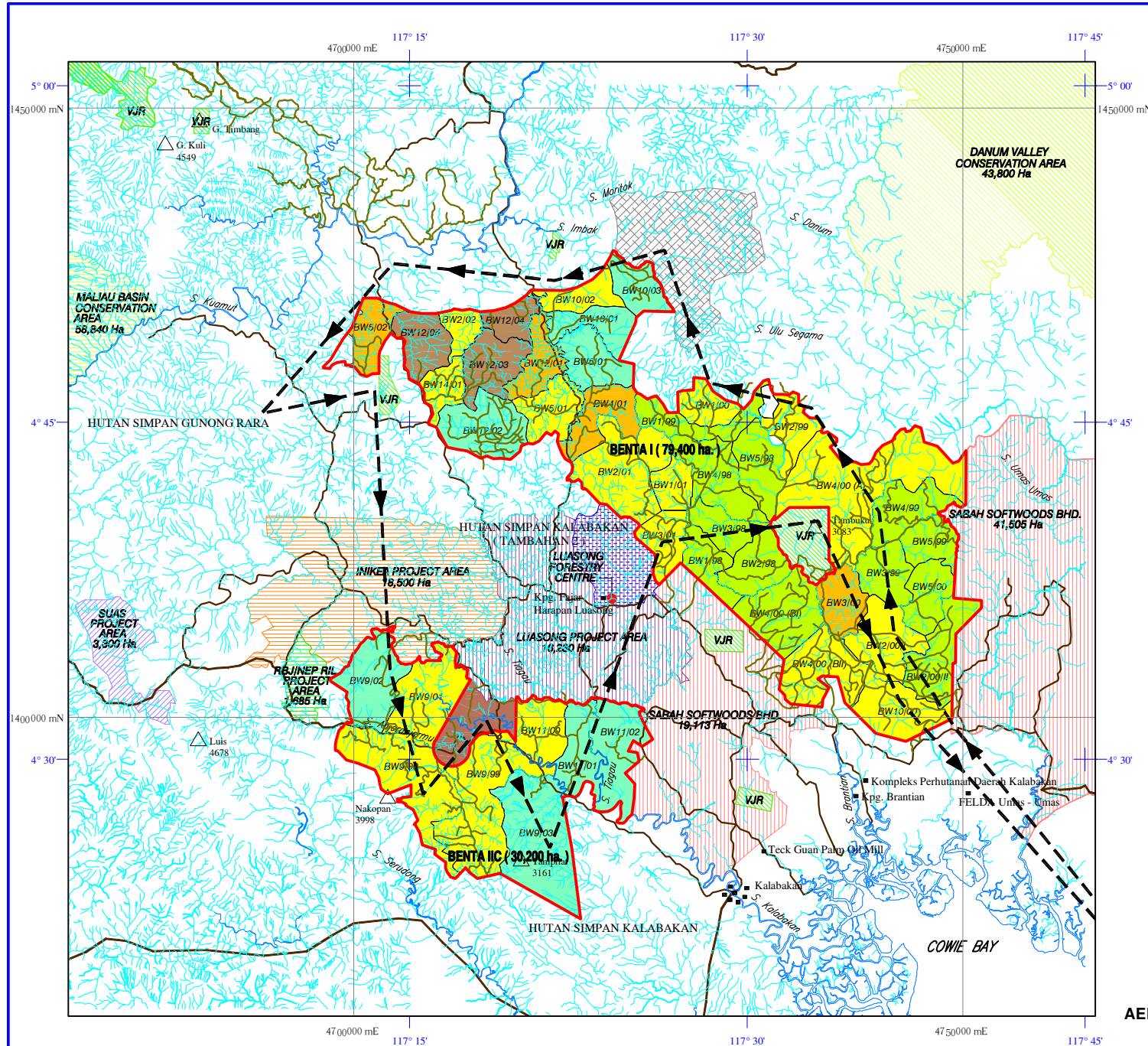


**SPECIAL ENVIRONMENTAL IMPACT ASSESSMENT**  
**PROPOSED OIL PALM PLANTATION (OPP) AND INDUSTRIAL TREE PLANTATION (ITP) DEVELOPMENT AT BENTA WAWASAN I AND BENTA WAWASAN IIC, YAYASAN SABAH FOREST MANAGEMENT AREA, KALABAKAN AND GUNUNG RARA FOREST RESERVES, TAWAU DISTRICT, SABAH**



**LEGEND:**

- PROJECT SITES
- RIVERS
- MAIN LOGGING ROADS
- SECONDARY LOGGING ROADS
- VIRGIN JUNGLE RESERVE
- DANUM BASIN CONSERVATION AREA
- MALIAU BASIN CONSERVATION AREA
- SABAH SOFTWOODS BHD.
- INIKEA PROJECT AREA
- SUIAS PROJECT AREA
- RBJ/NEP RIL PROJECT AREA
- LUASONG PROJECT AREA
- WATERSHED FOR LUASONG FORESTRY CENTRE
- ORANG UTAN RESERVE AREA
- SALT LICK / MUD VOLCANO BUFFER
- RELOG IN PROGRESS
- RELOG (OLCS) NOT IN OPERATION YET
- SALVAGING IN PROGRESS
- SALVAGING NOT IN OPERATION YET
- JV SSB PLANTING TREE PROJECT
- AERIAL SURVEY ROUTE (28-11-04)



0 5 10 15 20km  
 SCALE IN KILOMETRES (1:475,000) - A3 MEDIUM

**GRID**  
 -The numbered lines indicate the Netherlands East Indies Grid, Equatorial Zone, Bossel Spheroid  
 -The outer ticks / inner crosses indicate the Latitude and Longitude

**SOURCE:** Adapted from Innoprise Corporation Sdn. Bhd. Rakyat Berjaya Sdn. Bhd.

**AERIAL SURVEY OF THE PROPOSED PROJECT SITE AND ITS SURROUNDING**

**FIGURE: A1.7**