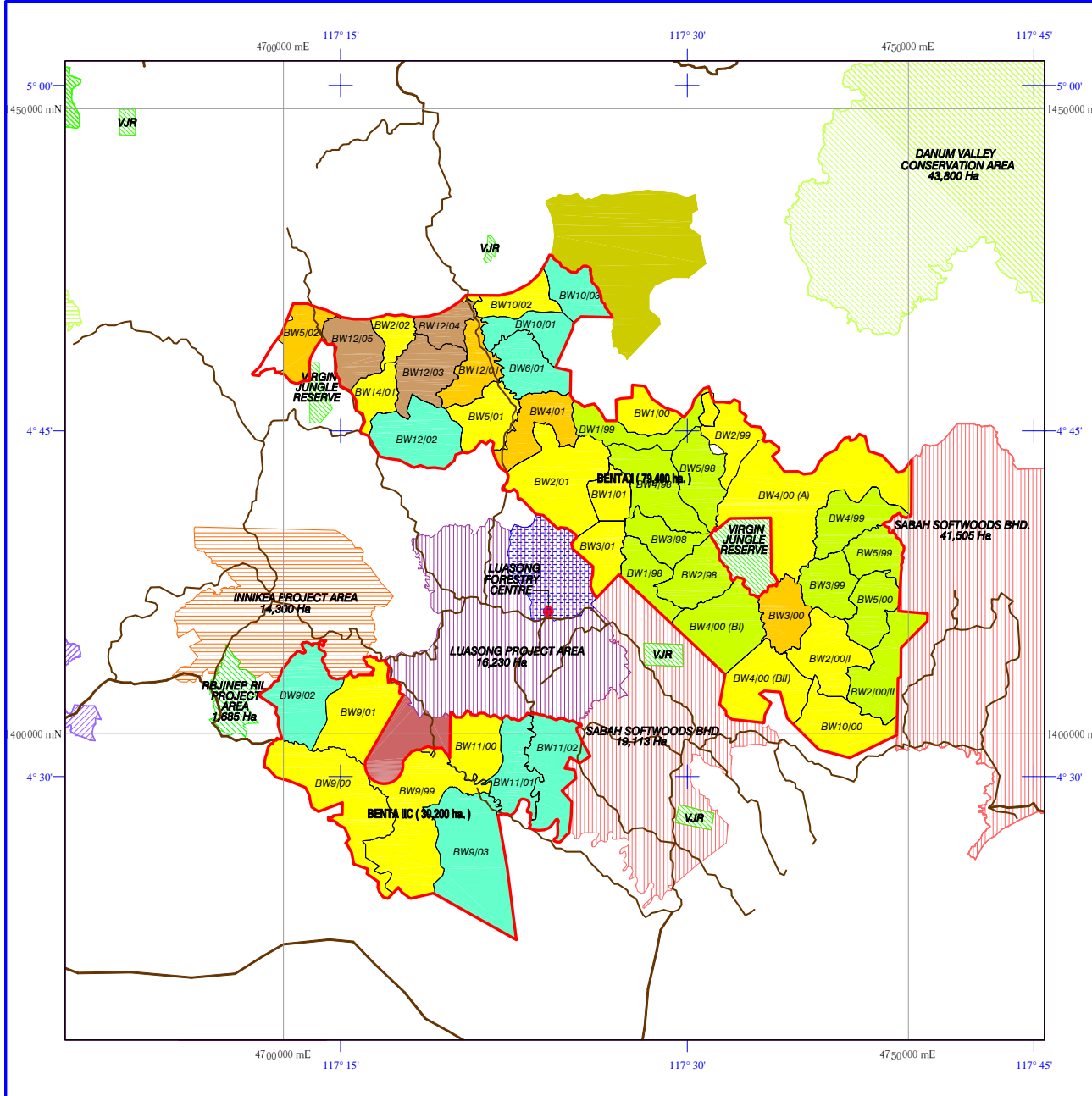
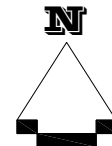


ENVIRONMENTAL IMPACT ASSESSMENT
PROPOSED OIL PALM PLANTATION (OPP) AND INDUSTRIAL
TREE PLANTATION (ITP) DEVELOPMENT AT
BENTA WAWASAN I AND BENTA WAWASAN IIC,
YAYASAN SABAH FOREST MANAGEMENT AREA,
KALABAKAN AND GUNUNG RARA FOREST RESERVES,
TAWAU DISTRICT, SABAH



LEGEND:

- | | | | |
|--|---------------------------------------|--|-----------------------------------|
| | PROJECT SITES | | RELOG IN PROGRESS |
| | VIRGIN JUNGLE RESERVE | | RELOG (OLCS) NOT IN OPERATION YET |
| | MAIN LOGGING ROADS | | SALVAGING IN PROGRESS |
| | DANUM VALLEY CONSERVATION AREA | | SALVAGING NOT IN OPERATION YET |
| | SABAH SOFTWOODS BHD. | | JV SSB PLANTING TREE PROJECT |
| | INNIKEA PROJECT AREA | | |
| | SUAS PROJECT AREA | | |
| | RBJ/NEP RIL PROJECT AREA | | |
| | LUASONG PROJECT AREA | | |
| | WATERSHED FOR LUASONG FORESTRY CENTRE | | |
| | ORANG UTAN RESERVE AREA | | |
| | SALT LICK / MUD VOLCANO BUFFER | | |



0 5 10 15 20km
 SCALE IN KILOMETRES (1:475,000) – A3 MEDIUM

GRID
 -The numbered lines indicate the Netherlands East Indies Grid, Equatorial Zone, Bessel Spheroid
 -The outer ticks / inner crosses indicate the Latitude and Longitude

SOURCE: Adapted from
 Innoprise Corporation Sdn. Bhd
 Rekyat Berjaya Sdn. Bhd.

PROJECT JV PLANTATION

FIGURE: 3