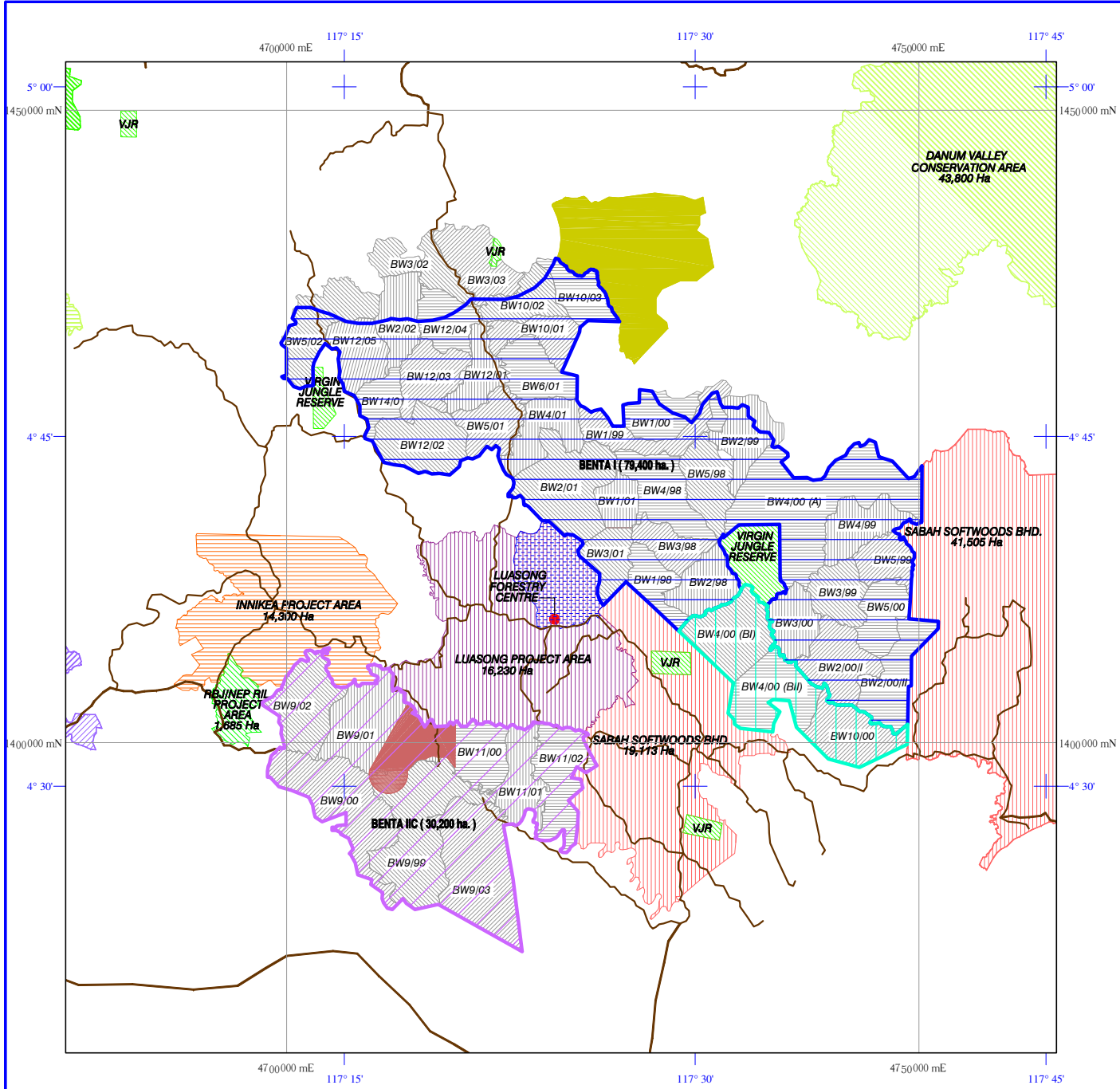
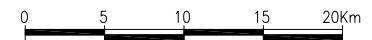
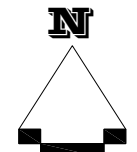


ENVIRONMENTAL IMPACT ASSESSMENT
PROPOSED OIL PALM PLANTATION (OPP) AND INDUSTRIAL
TREE PLANTATION (ITP) DEVELOPMENT AT
BENTA WAWASAN I AND BENTA WAWASAN IIC,
YAYASAN SABAH FOREST MANAGEMENT AREA,
KALABAKAN AND GUNUNG RARA FOREST RESERVES,
TAWAU DISTRICT, SABAH



LEGEND:

- YAYASAN - MELAKA JV
- RATUS AWANSARI SDN. BHD. JV
- YAYASAN SABAH GROUP
- VIRGIN JUNGLE RESERVE
- MAIN LOGGING ROADS
- DANUM VALLEY CONSERVATION AREA
- SABAH SOFTWOODS BHD.
- INNIKEA PROJECT AREA
- SUAS PROJECT AREA
- RB/JNEP RIL PROJECT AREA
- LUASONG PROJECT AREA
- WATERSHED FOR LUASONG FORESTRY CENTRE
- ORANG UTAN RESERVE AREA
- SALT LICK / MUD VOLCANO BUFFER



SCALE IN KILOMETRES (1:475,000) – A3 MEDIUM

GRID
 -The numbered lines indicate the Netherlands East Indies Grid, Equatorial Zone, Basell Spheroid
 -The outer ticks / inner crosses indicate the Latitude and Longitude

SOURCE: Adapted from
 Innoprise Corporation Sdn. Bhd.
 Rakyat Berjaya Sdn. Bhd.

PROJECT JV PLANTATION

FIGURE: 2